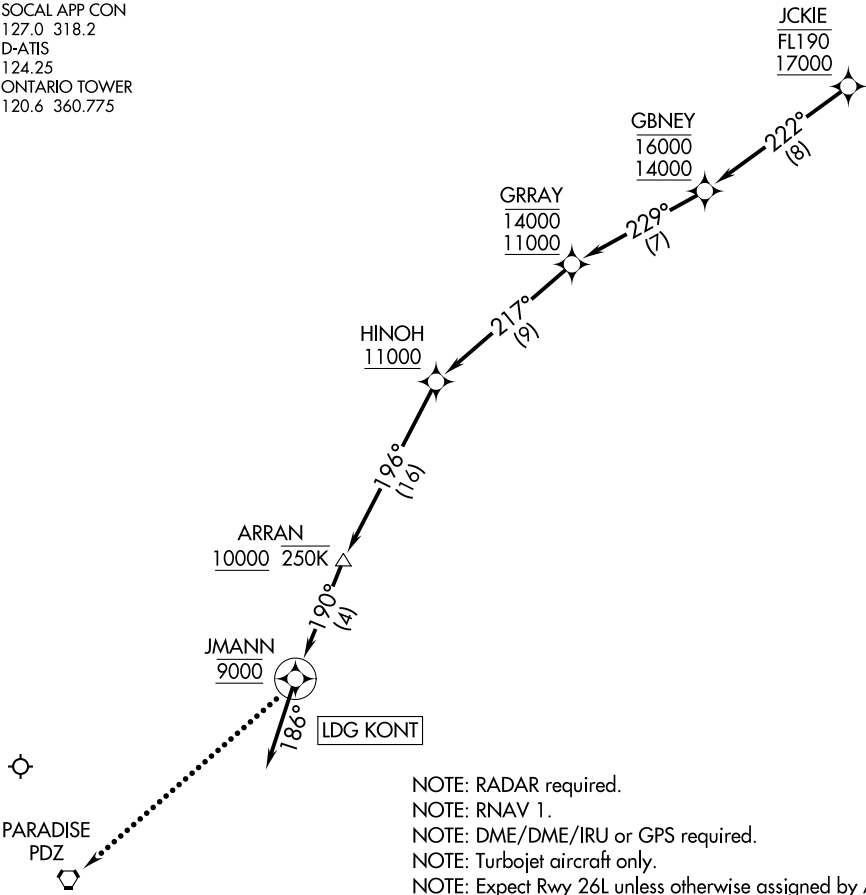


SOCAL APP CON
127.0 318.2
D-ATIS
124.25
ONTARIO TOWER
120.6 360.775



NOTE: Chart not to scale.

- NOTE: RADAR required.
- NOTE: RNAV 1.
- NOTE: DME/DME/IRU or GPS required.
- NOTE: Turbojet aircraft only.
- NOTE: Expect Rwy 26L unless otherwise assigned by ATC.
- NOTE: Expect local area altimeter setting reaching FL200.

ARRIVAL ROUTE DESCRIPTION

From JCKIE on track 222° to cross GBNEY between 14000 and 16000, then on track 229° to cross GRRAY between 11000 and 14000, then on track 217° to cross HINOH at or above 11000, then on track 196° to cross ARRAN at or above 10000 and at or below 250K, then on track 190° to cross JMANN at 9000, then on heading 186° or as assigned by ATC. Expect RADAR vectors to final approach course.

LOST COMMUNICATIONS

- LANDING WEST: After JMANN, proceed to PARADISE (PDZ) VORTAC and execute the ILS or LOC RWY 26L or RNAV (GPS) RWY 26L approach.
- LANDING EAST: After JMANN, proceed to PARADISE (PDZ) VORTAC and execute the ILS or LOC RWY 8L approach.